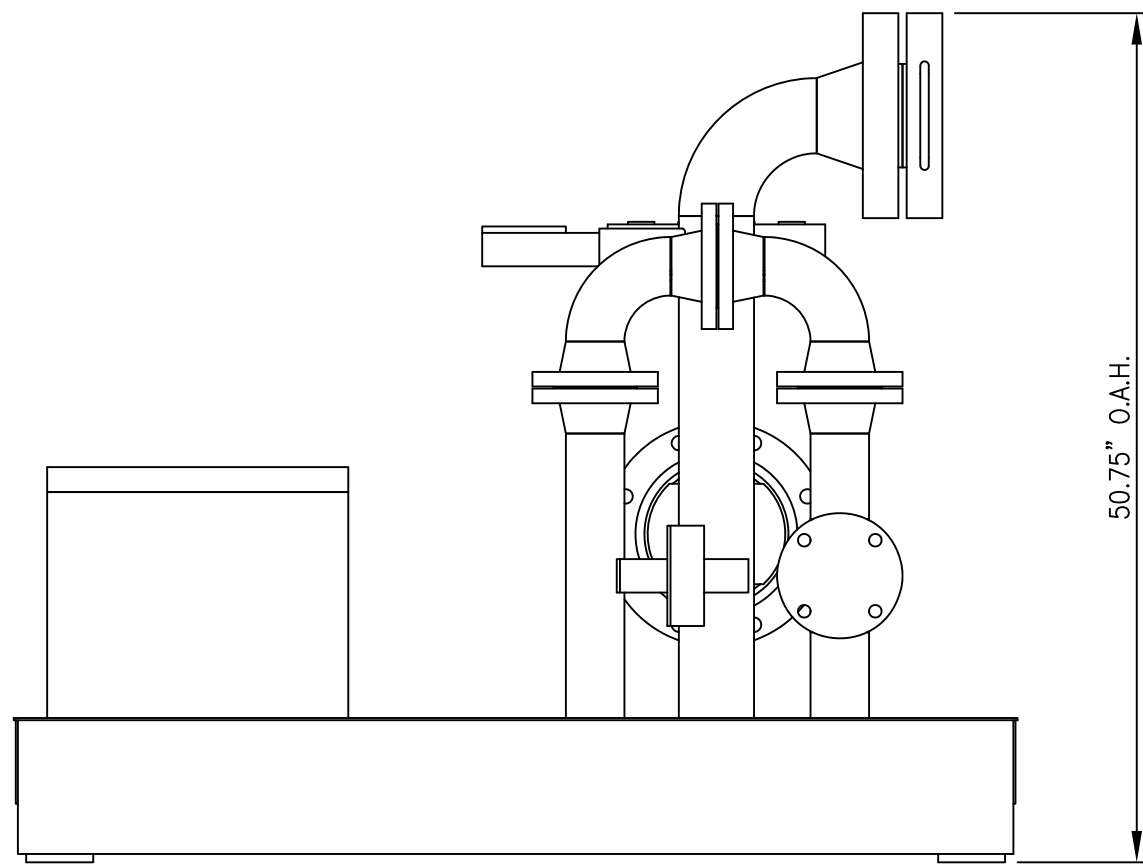
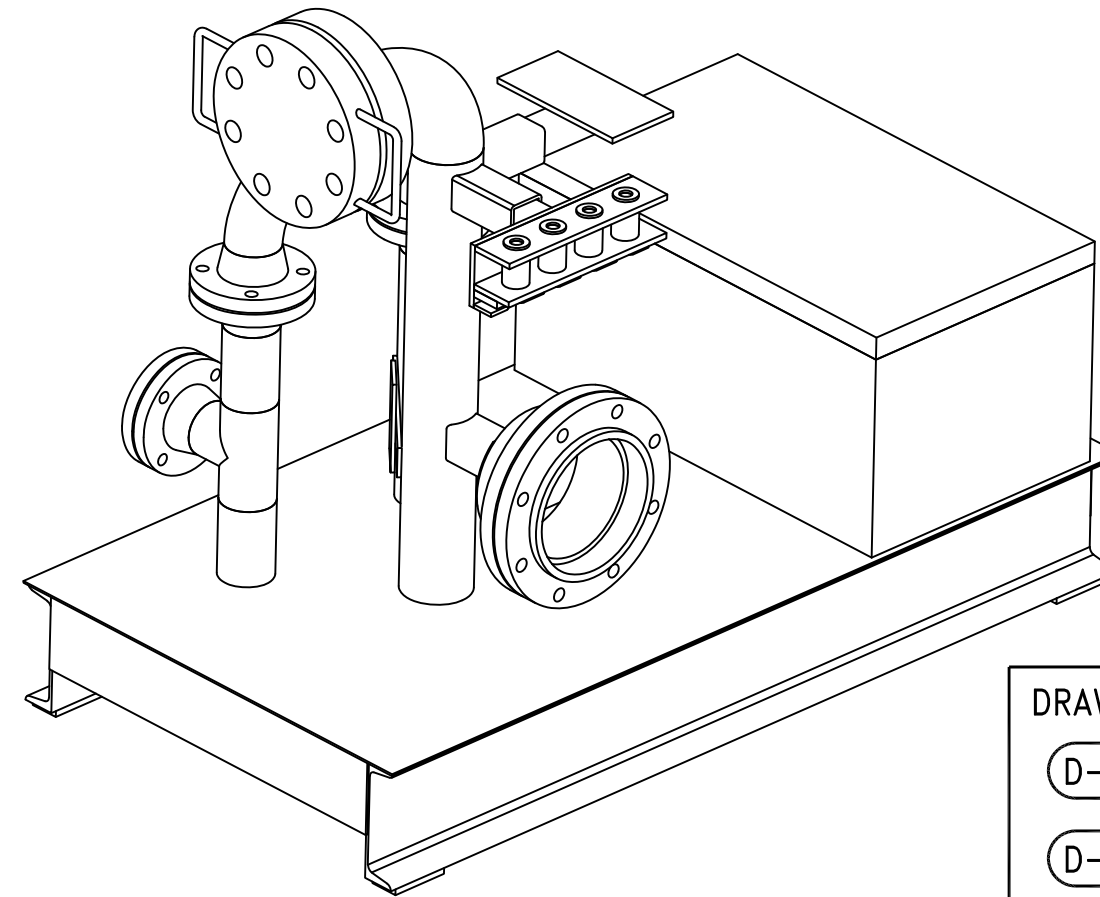
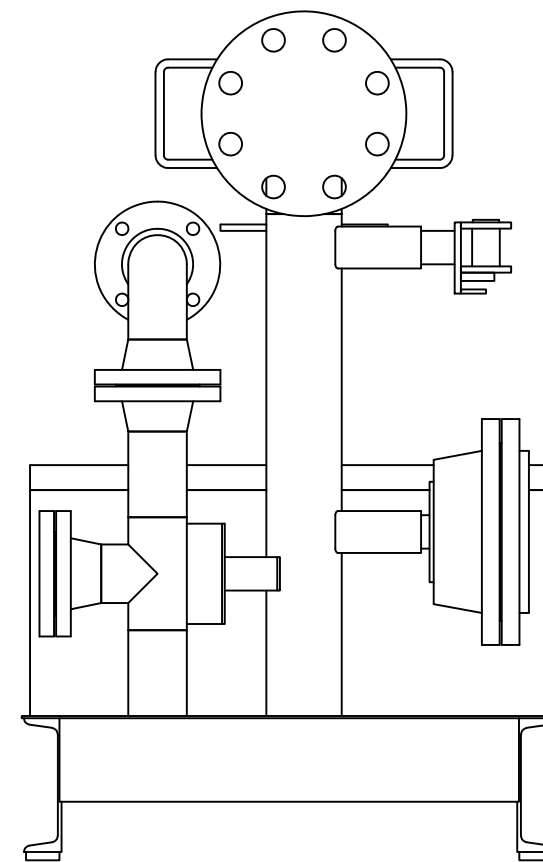


TOP VIEW



LEFT VIEW



FRONT VIEW

DRAWING DETAIL LOCATIONS

- D-002** DETAILS OF BASE SUPPORT ASSEMBLY
- D-003** DETAILS OF NPS 3" PIPE ASSEMBLY
- D-004** DETAILS OF NPS 4" PIPE ASSEMBLY
- D-005** DETAILS OF 3-BOLT K-FACTOR SYSTEM
- D-006** DETAILS OF CHUCK BRAIN BRACKETS
- D-007** DETAILS OF TRAILER HITCH FASTENERS

GENERAL NOTES

1. ALL FLANGE BOLT HOLES TO STRADDLE CENTERLINES.
2. ALL WELDS TO BE MADE WITH E-70 WELD FILLER.
3. PAINT COMPLETED SKID (EXCLUDING STUDS, NUTS, AND ELECTRONICS) WITH GRAY CARBOLINE CARBOCOAT 75 OR EQUIVALENT.

REV.	BY	REV'D.	DATE	DESCRIPTION
A	NB	EC	05/10/22	ISSUED FOR REVIEW
0	NB	EC	05/16/22	ISSUED FOR CONSTRUCTION

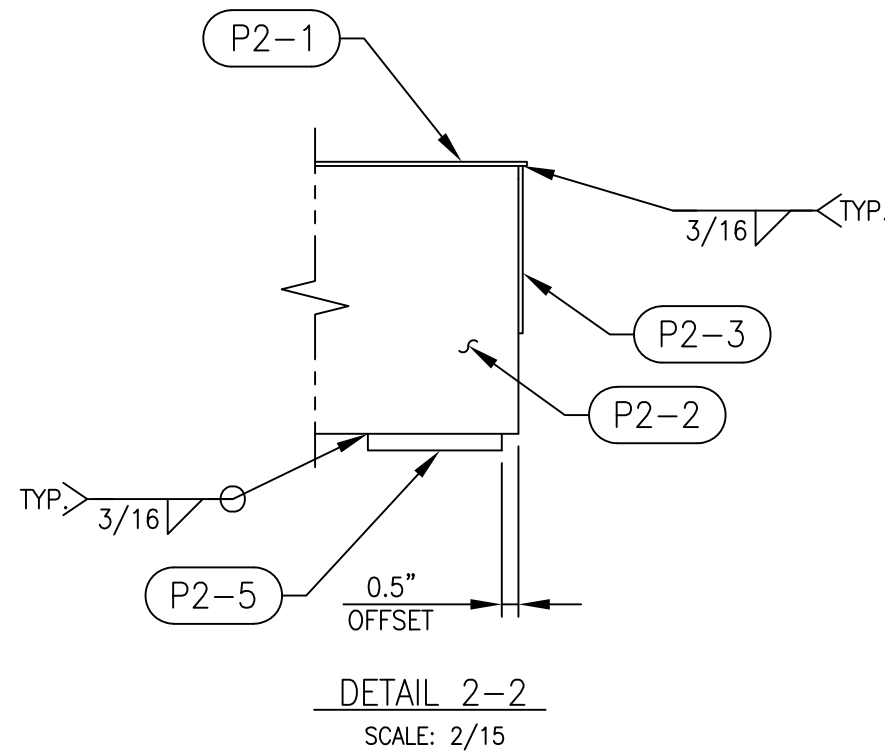
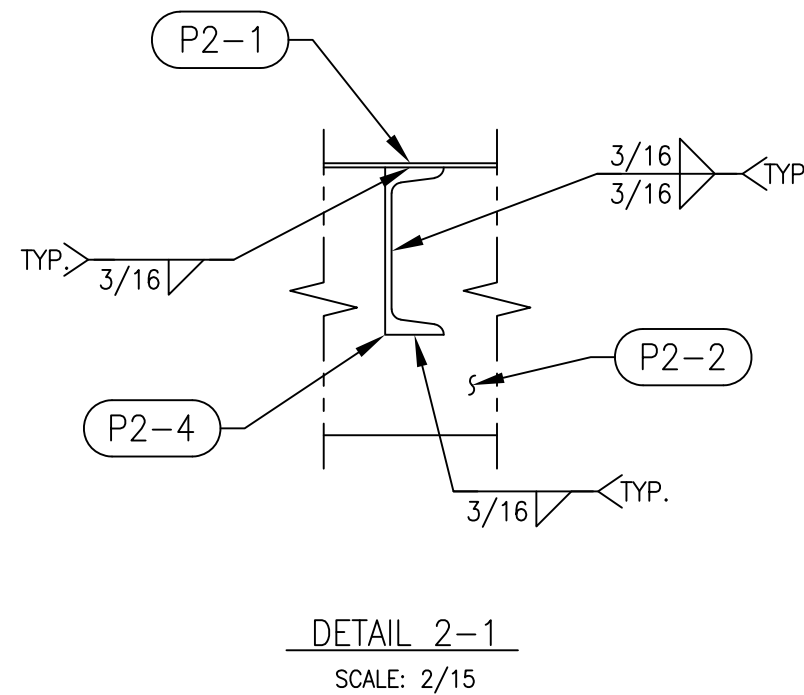
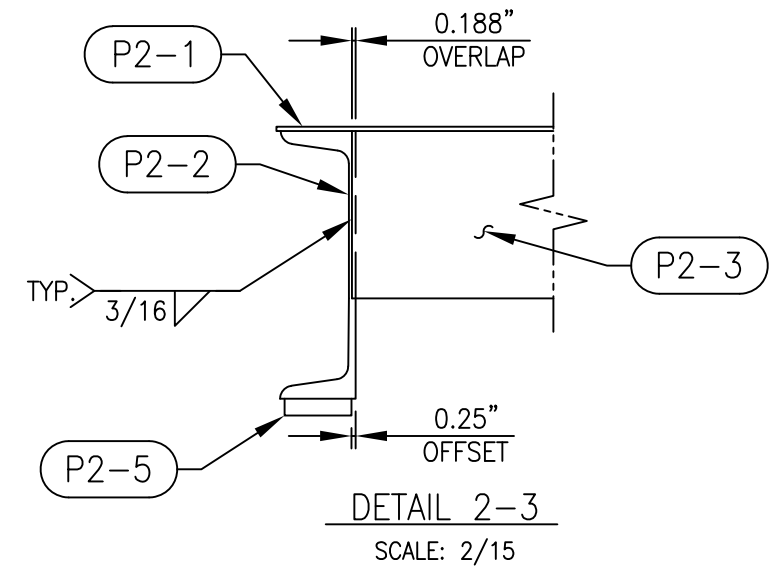
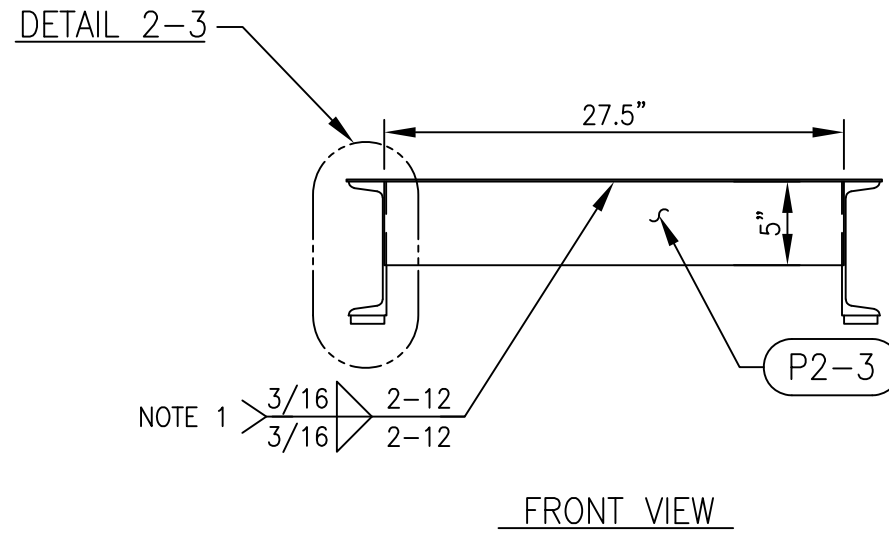
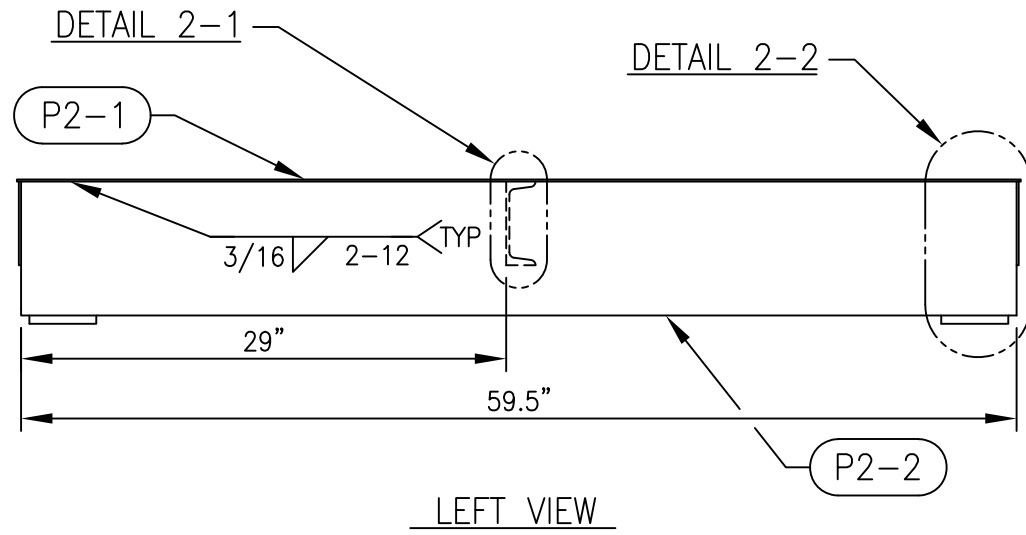


1600 E. TIGUA, KECHI, KANSAS 67067

**CHUCK SKID DEMO UNIT
GENERAL ARRANGEMENT DRAWING**

SCALE	DRAWING NUMBER	SHEET NUMBER	REVISION
1/15	33285-D-001	1 OF 1	0

BILL OF MATERIALS				
ITEM	QTY.	DESCRIPTION	MATERIAL	
P2-1	1	32" X 60" PLATE, 10 GAUGE	CS	
P2-2	2	C8X11.5 CHANNEL X 59.5" LG.	A36	
P2-3	2	5" X 27.5" PLATE, 10 GAUGE	CS	
P2-4	1	C5X6.7 CHANNEL X 27" LG.	A36	
P2-5	4	2" X 4" PLATE, 0.5" THK.	A36	



NOTES

1. CENTER C5X6.7 CHANNEL (P2-4) TO TOP PLATE (P2-1) WELD.

REV.	BY	REV'D.	DATE	DESCRIPTION
A	NB	EC	05/10/22	ISSUED FOR REVIEW
0	NB	EC	05/16/22	ISSUED FOR CONSTRUCTION

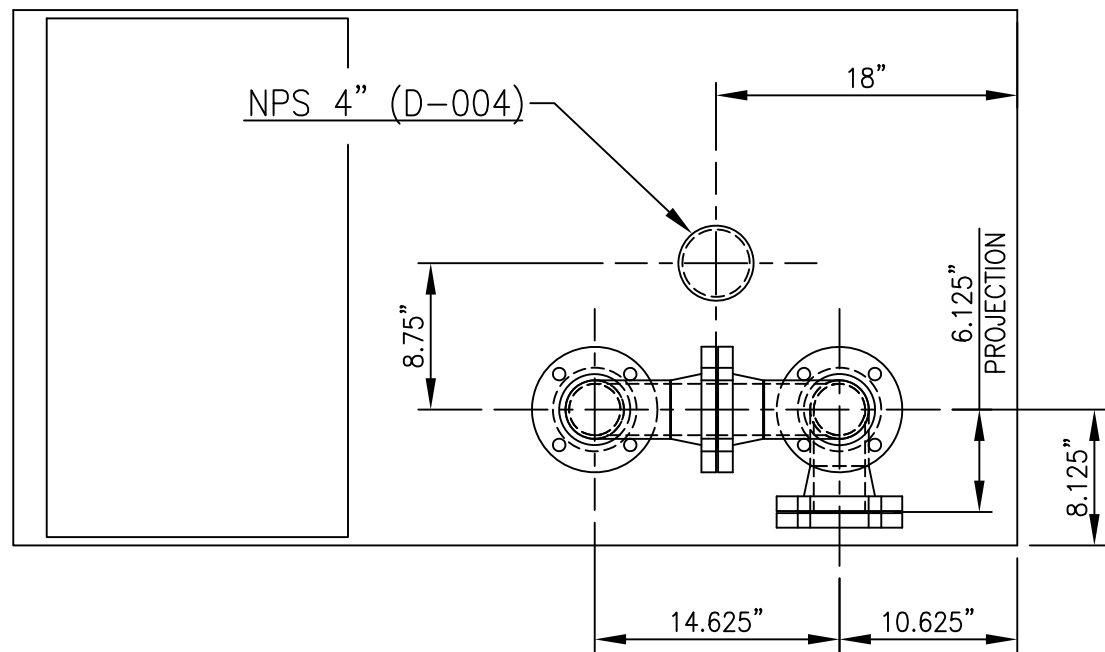


1600 E. TIGUA, KECHI, KANSAS 67067

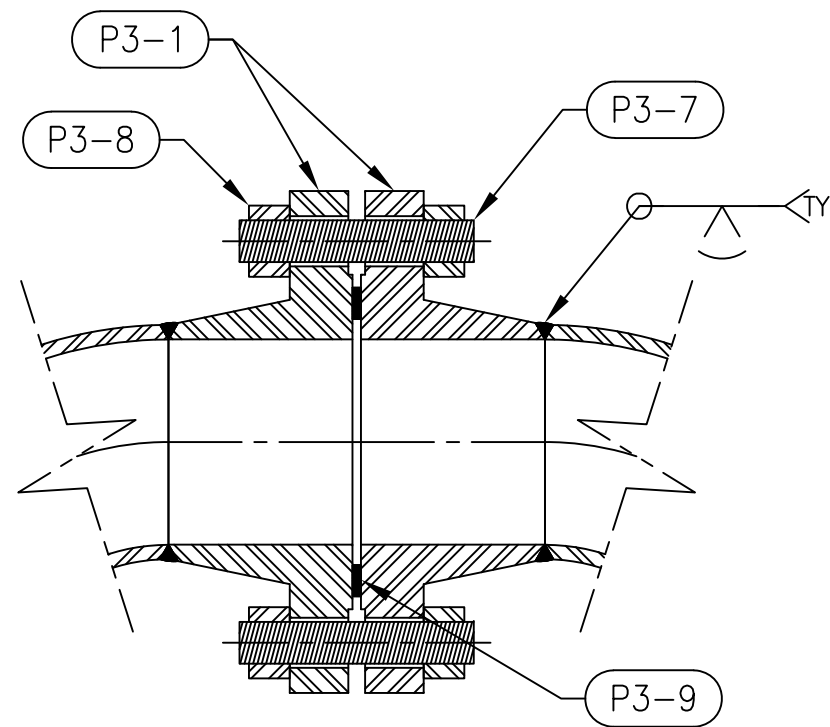
CHUCK SKID DEMO UNIT
BASE ASSEMBLY DETAILS

SCALE	DRAWING NUMBER	SHEET NUMBER	REVISION
1/15	33285-D-002	1 OF 1	0

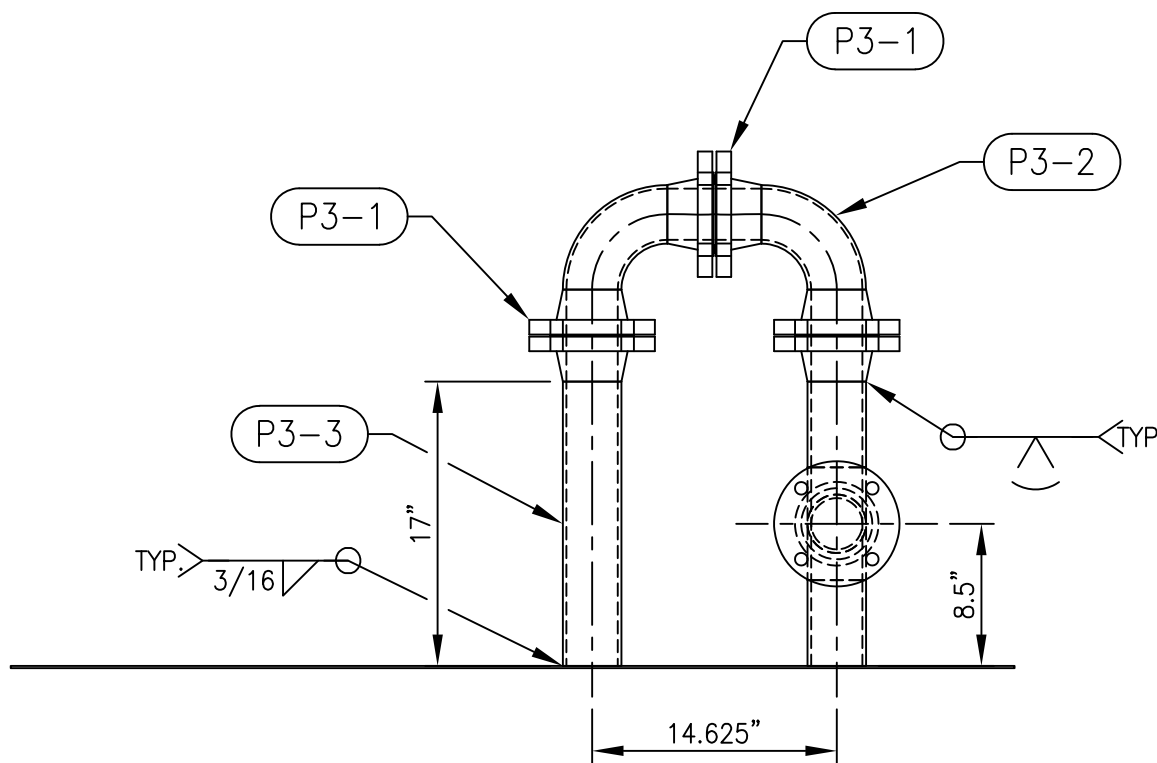
BILL OF MATERIALS			
ITEM	QTY.	DESCRIPTION	MATERIAL
P3-1	7	NPS 3" CL-150 RFWN FLG, SCH. STD BORE	SA-105
P3-2	2	NPS 3" LR ELBOW, SCH. STD	SA-234-WPB
P3-3	1	NPS 3" SCH. STD PIPE, 17" LG.	SA-53B
P3-4	1	NPS 3" TEE, SCH. STD	SA-234-WPB
P3-5	2	NPS 3" SCH. STD PIPE, 5.125" LG.	SA-53B
P3-6	1	NPS 3" CL-150 BLIND FLG.	SA-105
P3-7	16	0.625" UNC-11 STUD X 3.5" LG., LOAD INDICATING	ANY
P3-8	32	0.625" HH NUT	ANY
P3-9	4	NPS 3" CL-150 SPIRAL WOUND GASKET	SS



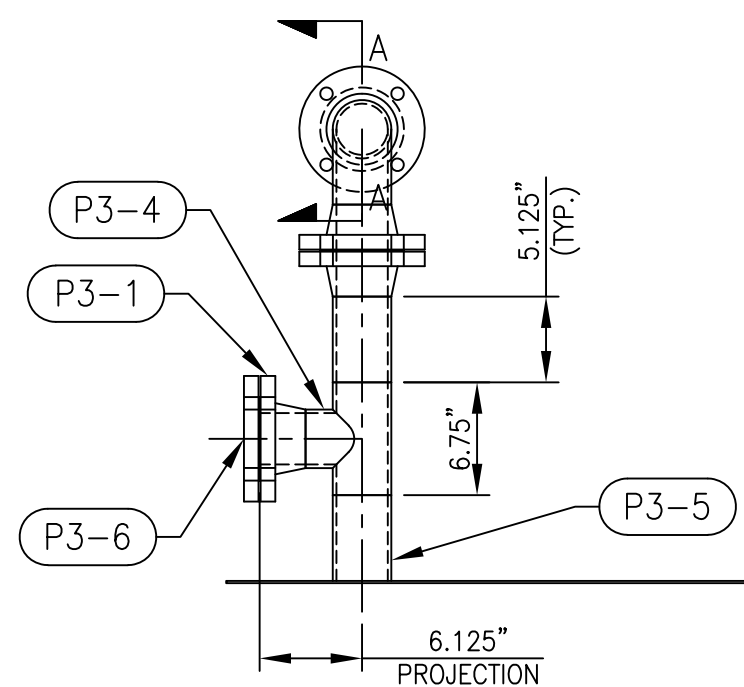
TOP VIEW



SECTION A-A
(TYP. NPS 3" FLANGE ASSEMBLY)
SCALE: 4/15



LEFT VIEW



FRONT VIEW

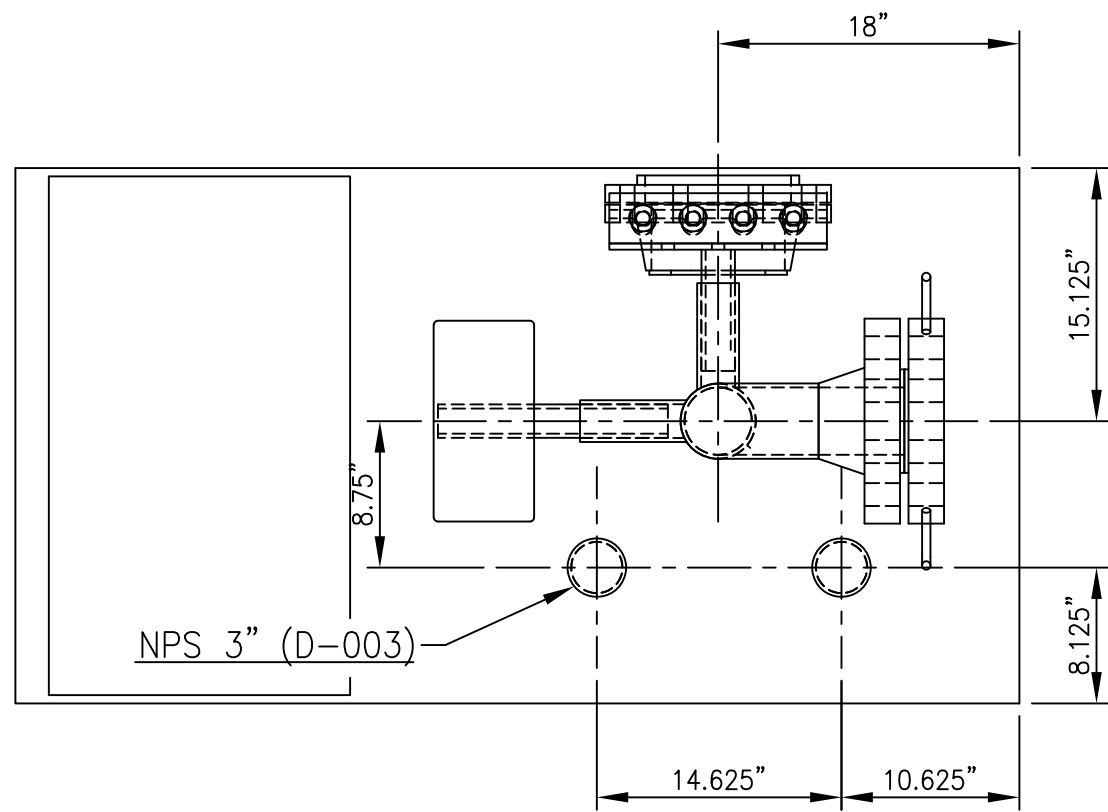
REV.	BY	REV'D.	DATE	DESCRIPTION
A	NB	EC	05/10/22	ISSUED FOR REVIEW
0	NB	EC	05/16/22	ISSUED FOR CONSTRUCTION



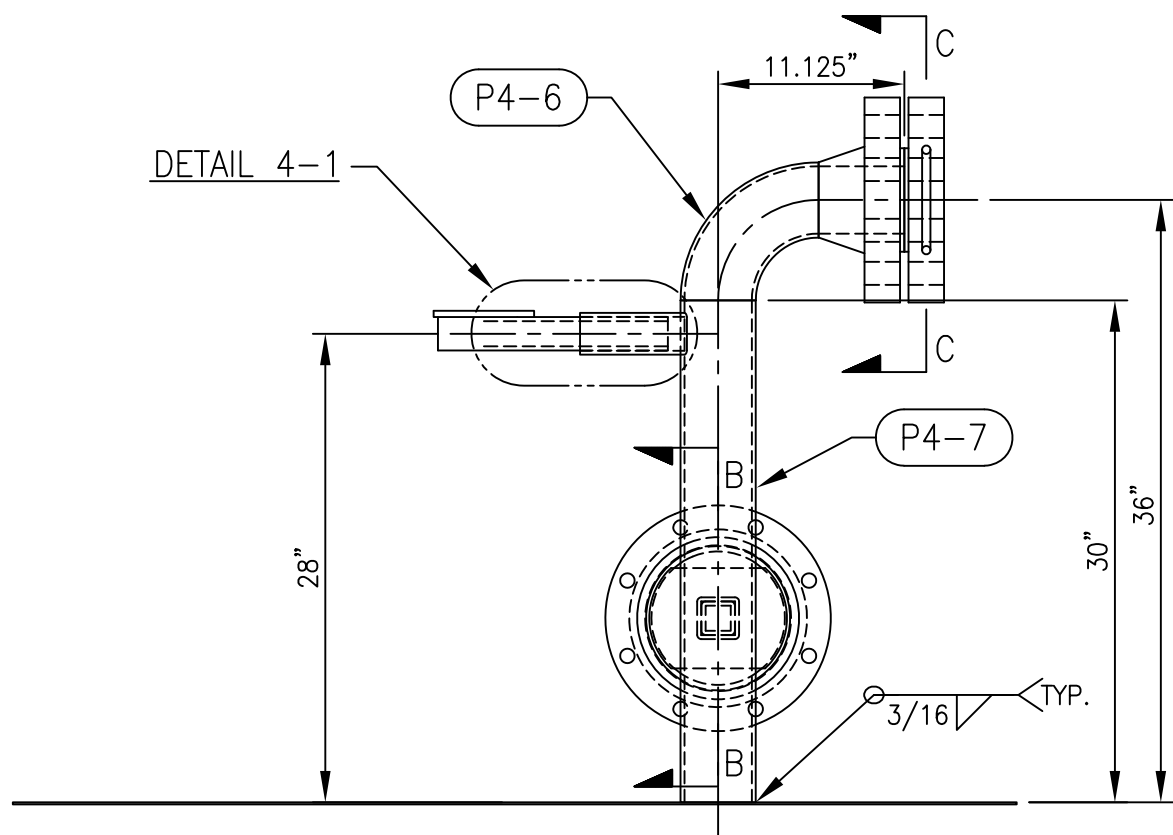
1600 E. TIGUA, KECHI, KANSAS 67067

CHUCK SKID DEMO UNIT
NPS 3" PIPE ASSEMBLY DETAILS

SCALE	DRAWING NUMBER	SHEET NUMBER	REVISION
1/15	33285-D-003	1 OF 1	0

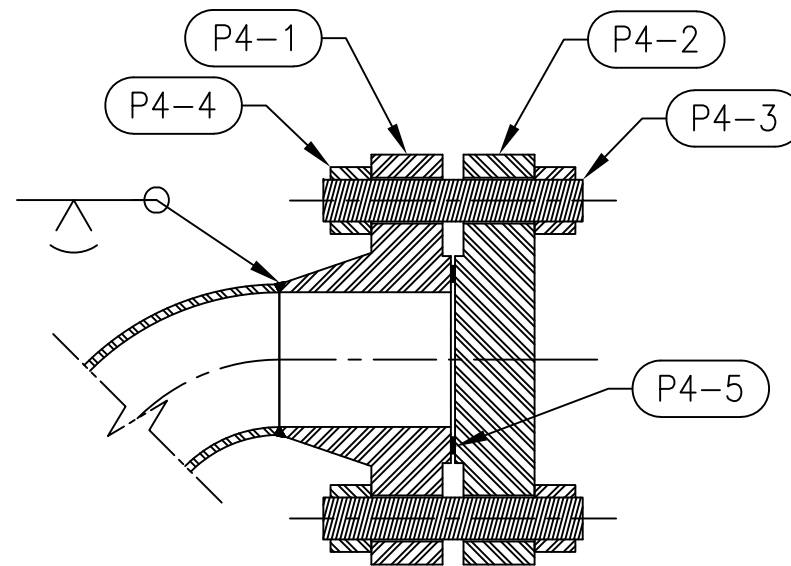


TOP VIEW



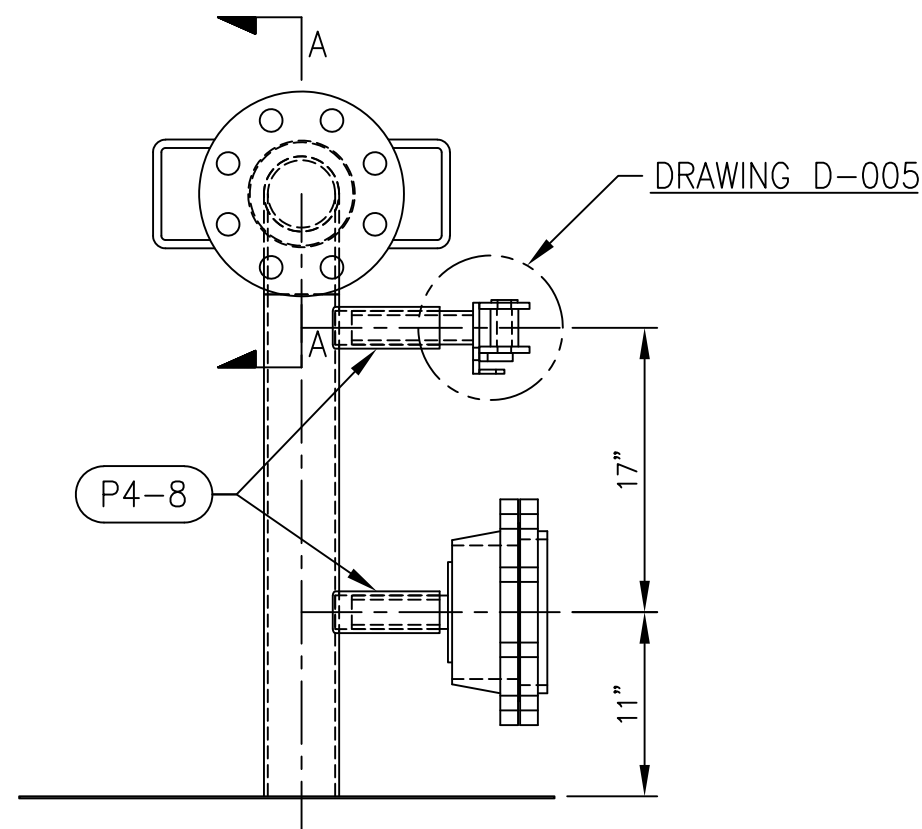
LEFT VIEW

(K-FACTOR SYSTEM HIDDEN FOR CLARITY)



SECTION A-A

SCALE: 2/15



FRONT VIEW

(COMPUTER STAND BRACKET HIDDEN FOR CLARITY)

BILL OF MATERIALS

ITEM	QTY.	DESCRIPTION	MATERIAL
P4-1	1	NPS 4" CL-1500 RFWN FLG., SCH. STD BORE	SA-105
P4-2	1	NPS 4" CL-1500 BLIND FLG.	SA-105
P4-3	8	1.25" UNC-8 STUD X 7.75" LG., LOAD INDICATING	ANY
P4-4	16	1.25" HH NUTS	ANY
P4-5	1	NPS 4" CL-1500 SPIRAL WOUND GASKET	SS
P4-6	1	NPS 4" LR ELBOW, SCH. STD	SA-234-WPB
P4-7	1	NPS 4" SCH. STD PIPE, 30" LG.	SA-53B
P4-8	3	2.5" X 2.5" SQ. TUBE X 0.238" THK., 6.375" LG.	CS
P4-9	1	2" X 2" SQ. TUBE X 0.25" THK., 5.75" LG.	CS
P4-10	1	NPS 8" CL-150 RFWN FLG., SCH. STD BORE	SA-105
P4-11	1	NPS 8" CL-150 RFSO FLG.	SA-105
P4-12	16	0.75" HH NUTS	ANY
P4-13	8	0.75" UNC-10 STUD, 4.5" LG., LOAD INDICATING	ANY
P4-14	1	NPS 8" CL-150 SPIRAL WOUND GASKET	SS
P4-15	1	6" X 8" PLATE, 0.25" THK.	A36
P4-16	1	6" X 12" PLATE, 0.375" THK.	A36
P4-17	1	2" X 2" SQ. TUBE X 0.25" THK., 13.75" LG.	CS
P4-18	2	0.5" DIA. ROD, BENT AS SHOWN IN SECTION D-D	CS

NOTES

1. DETAILS FOR THE PINS AND FASTENERS FOR THE TRAILER HITCH ASSEMBLY ARE PROVIDED IN DRAWING D-007.
2. DRILL 0.875" HOLE FOR TRAILER HITCH PIN.

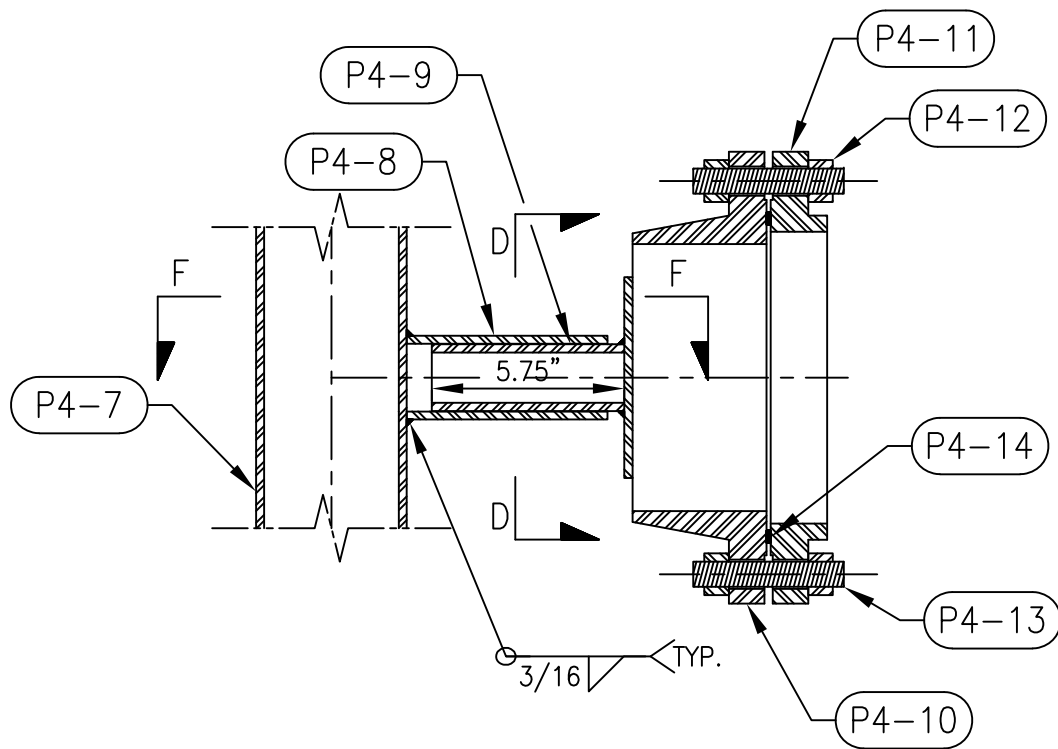
REV.	BY	REV'D.	DATE	DESCRIPTION
A	NB	EC	05/10/22	ISSUED FOR REVIEW
0	NB	EC	05/16/22	ISSUED FOR CONSTRUCTION



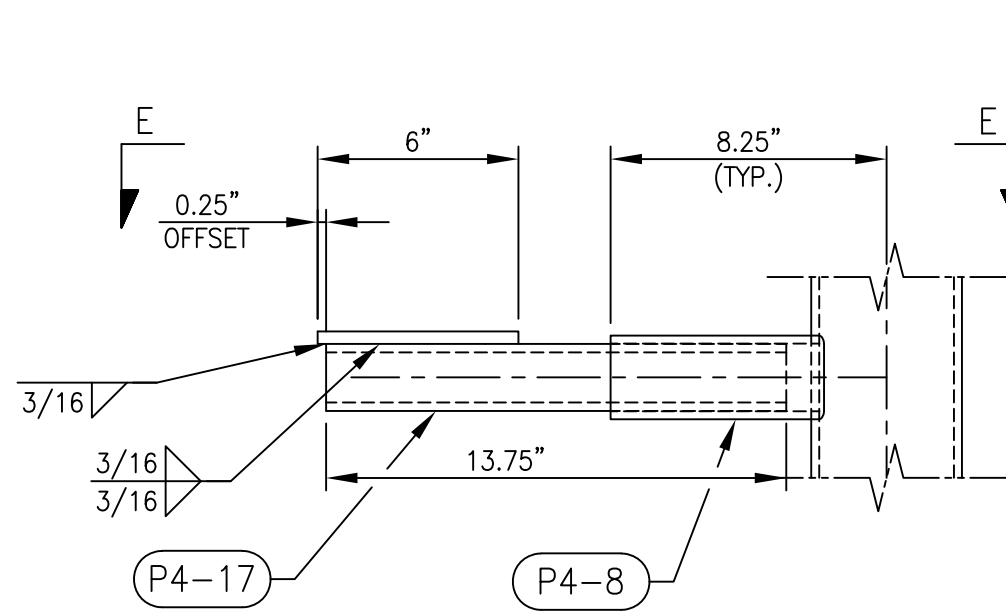
1600 E. TIGUA, KECHI, KANSAS 67067

CHUCK SKID DEMO UNIT
NPS 4" PIPE ASSEMBLY DETAILS

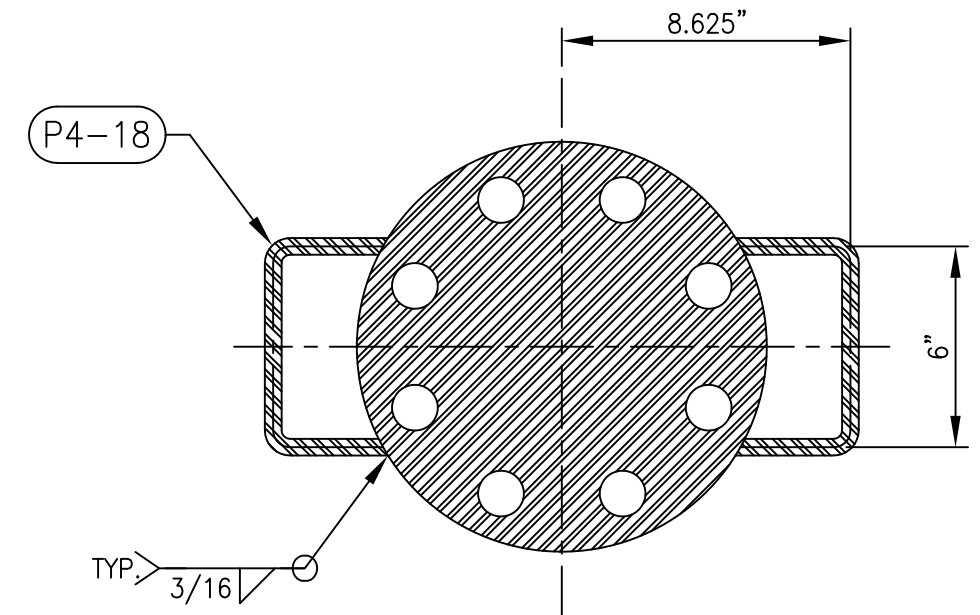
SCALE	DRAWING NUMBER	SHEET NUMBER	REVISION
1/15	33285-D-004	1 OF 2	0



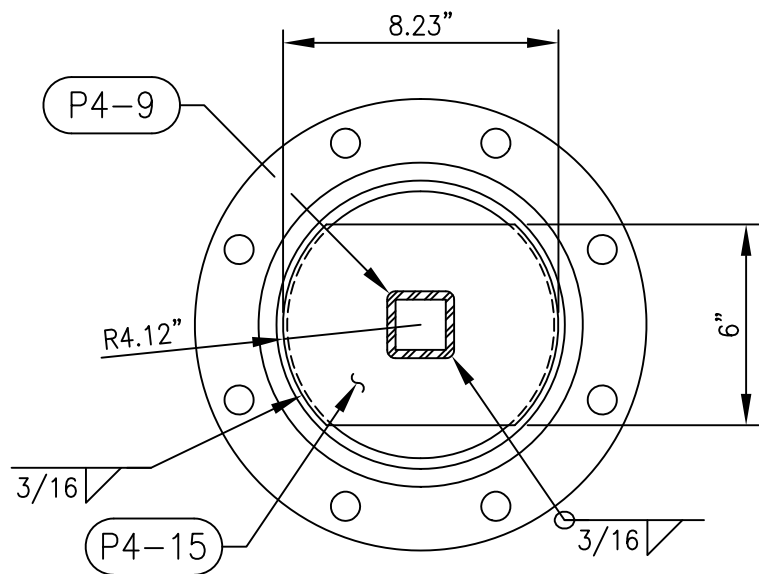
SECTION B-B
SCALE: 2/15



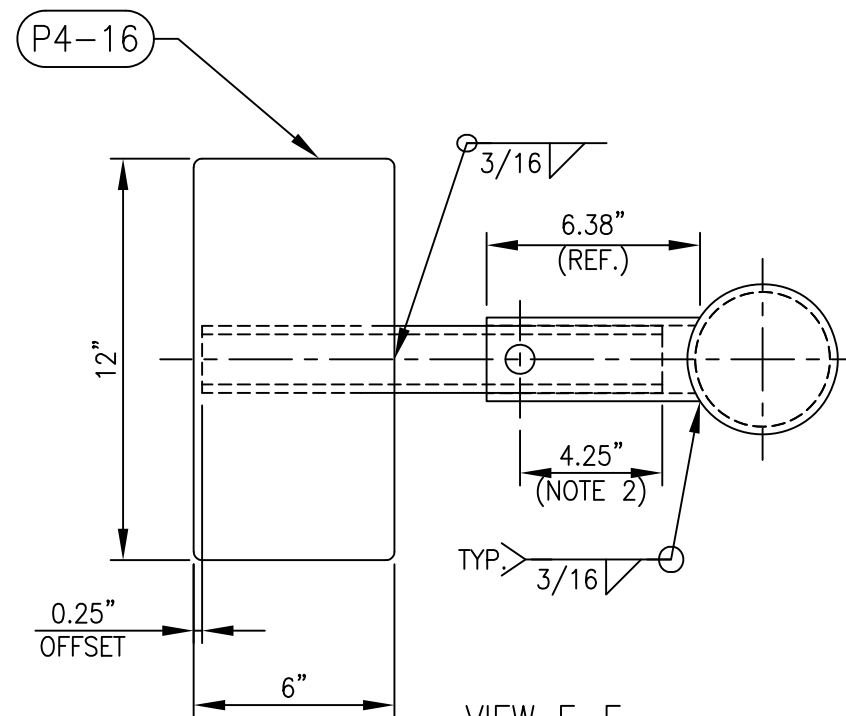
DETAIL 4-1
SCALE: 2/15



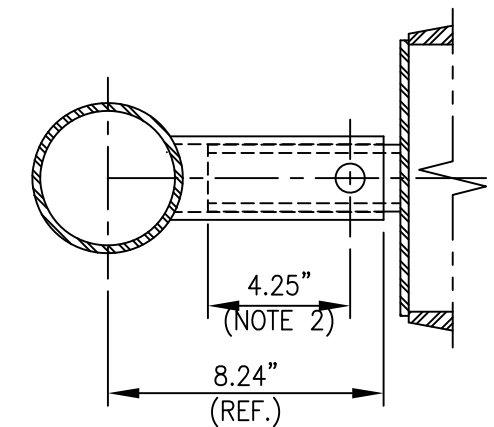
SECTION C-C
SCALE: 2/15



SECTION D-D
SCALE: 2/15



VIEW E-E
SCALE: 2/15



VIEW F-F
SCALE: 2/15

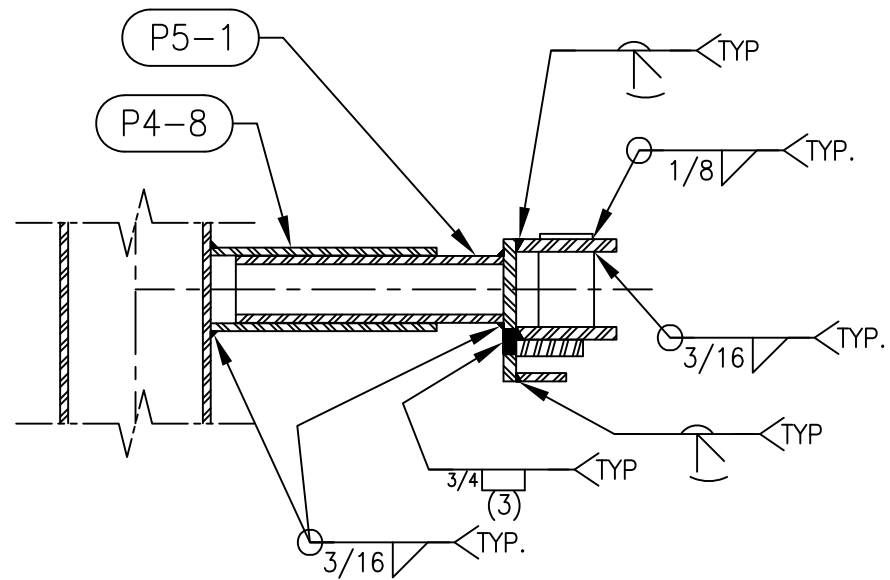
REV.	BY	REV'D.	DATE	DESCRIPTION
A	NB	EC	05/10/22	ISSUED FOR REVIEW
0	NB	EC	05/16/22	ISSUED FOR CONSTRUCTION



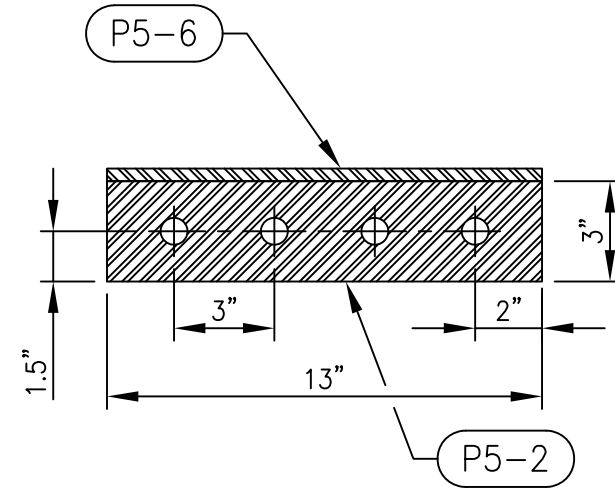
1600 E. TIGUA, KECHI, KANSAS 67067

CHUCK SKID DEMO UNIT
NPS 4" PIPE ASSEMBLY DETAILS

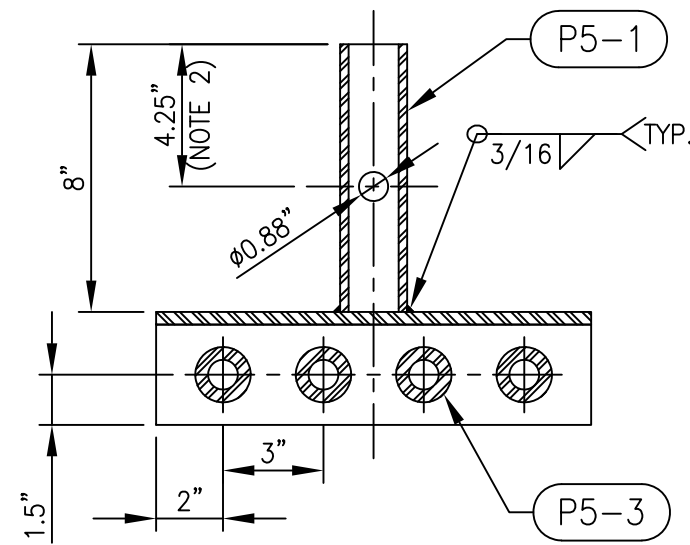
SCALE	DRAWING NUMBER	SHEET NUMBER	REVISION
1/15	33285-D-004	2 OF 2	0



SECTION A-A
SCALE: 2/15

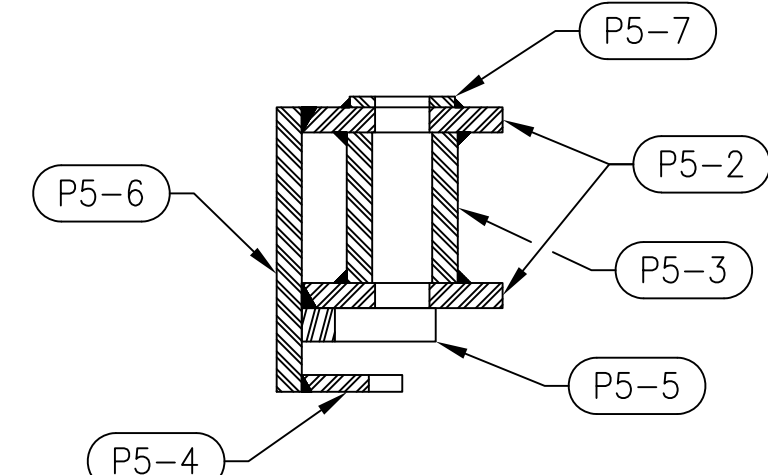


SECTION B-B
SCALE: 2/15

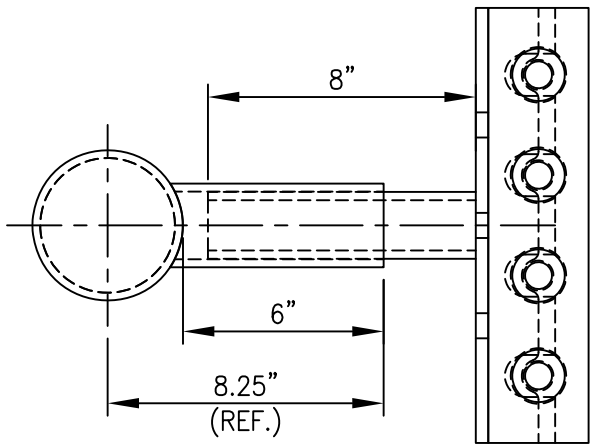


SECTION C-C
SCALE: 2/15

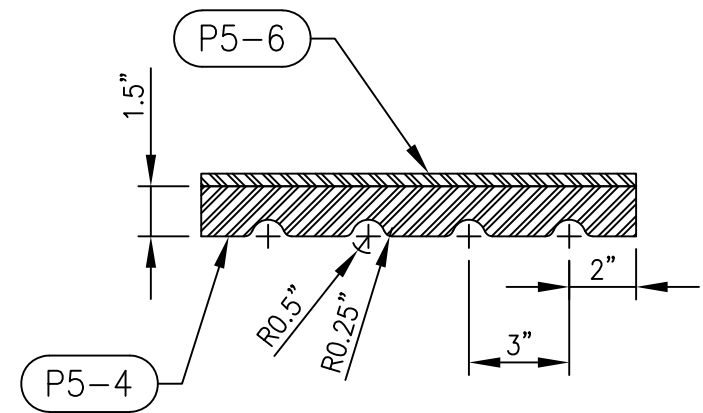
BILL OF MATERIALS			
ITEM	QTY.	DESCRIPTION	MATERIAL
P5-1	1	2" X 2" SQ. TUBE X 0.25" THK., 8" LG.	CS
P5-2	2	3" X 13" PLATE, 0.375" THK.	A36
P5-3	4	NPS 1.25" PIPE SCH. XXS, 2.25" LG.	SA-53B
P5-4	1	1.5" X 13" PLATE, 0.25" THK.	A36
P5-5	1	2" X 13" PLATE, 0.5" THK.	A36
P5-6	1	4.25" X 13" PLATE, 0.375" THK.	A36
P5-7	4	0.75" TYPE 4 WASHER	CS
P5-8	4	0.75" UNC-10 STUD X 8" LG., LOAD INDICATING	ANY
P5-9	8	0.75" HH NUTS	ANY



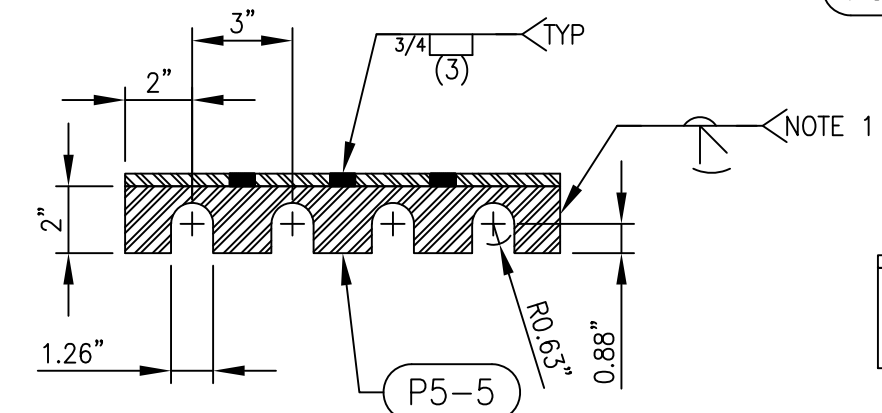
SECTION H-H
SCALE: 4/15



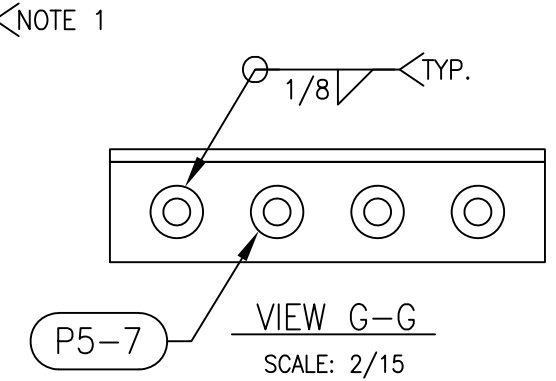
TOP VIEW
SCALE: 2/15



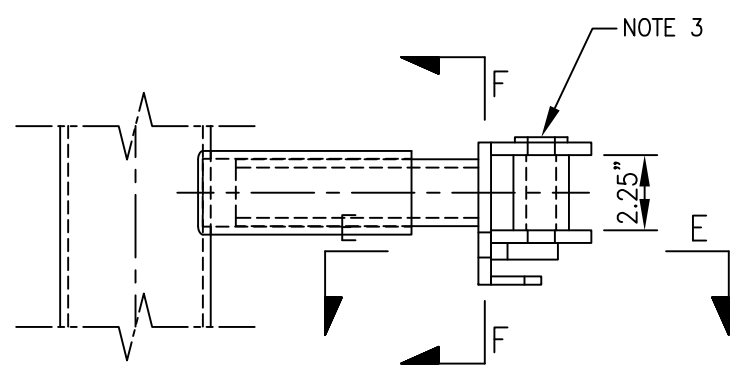
SECTION D-D
SCALE: 2/15



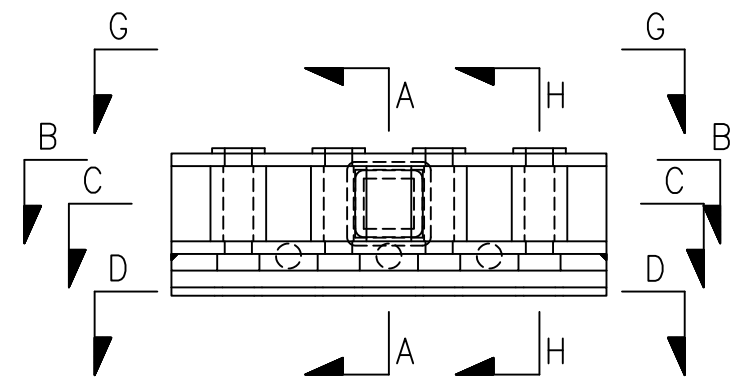
SECTION E-E
SCALE: 2/15



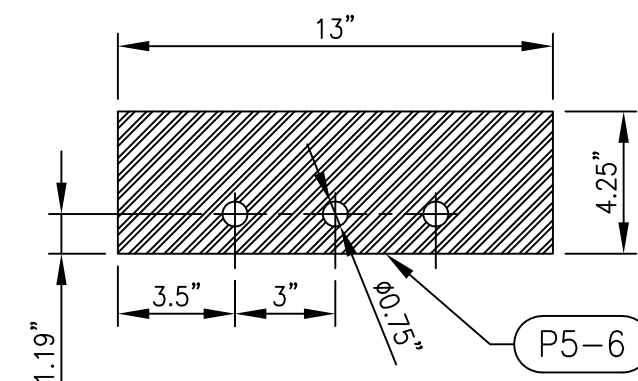
VIEW G-G
SCALE: 2/15



LEFT VIEW
SCALE: 2/15



FRONT VIEW
SCALE: 2/15



SECTION F-F
SCALE: 2/15

- NOTES**
1. CHAMFER PART P5-5 WITH A 0.25" DEEP, 45° CHAMFER FOR WELDING BEVEL.
 2. DRILL 0.875" HOLE FOR TRAILER HITCH PIN.
 3. SYSTEM INCLUDES 0.75" STUDS & NUTS (#P5-8 & P5-9).

REV.	BY	REV'D.	DATE	DESCRIPTION
A	NB	EC	05/10/22	ISSUED FOR REVIEW
0	NB	EC	05/16/22	ISSUED FOR CONSTRUCTION

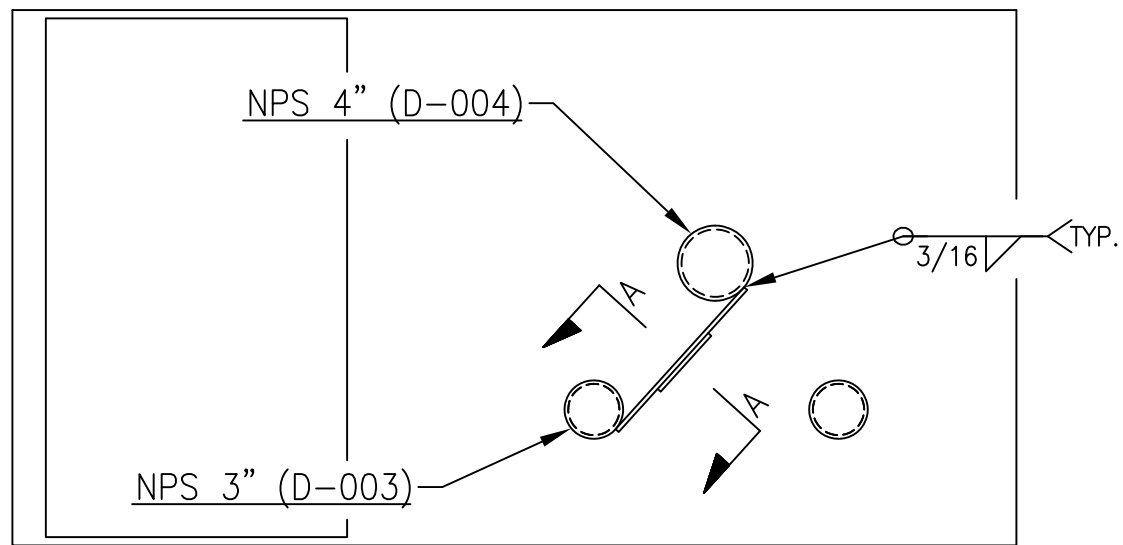


1600 E. TIGUA, KECHI, KANSAS 67067

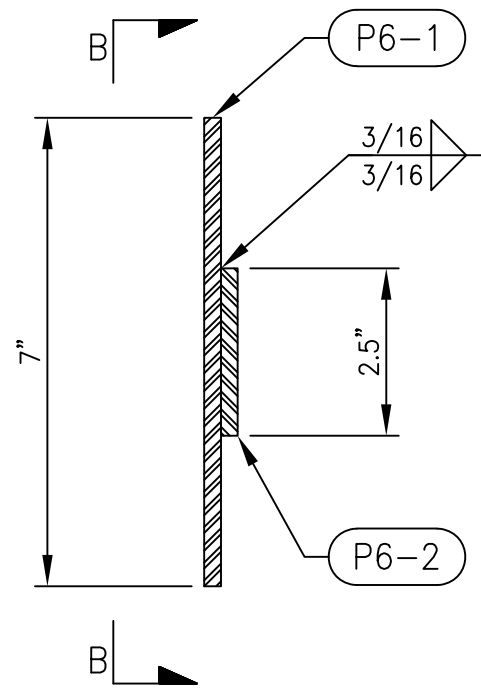
**CHUCK SKID DEMO UNIT
3-BOLT K-FACTOR SYSTEM DETAILS**

SCALE	DRAWING NUMBER	SHEET NUMBER	REVISION
1/15	33285-D-005	1 OF 1	0

BILL OF MATERIALS			
ITEM	QTY.	DESCRIPTION	MATERIAL
P6-1	1	4.5" X 7" PLATE, 0.25" THK.	A36
P6-2	1	2.5" X 11.5" PLATE, 0.25" THK.	A36
P6-3	4	PHILLIPS HEAD SCREW, 10-32 THREAD, 0.5" LG., MCMASTER-CARR PART #91772A829	PASS. 18-8

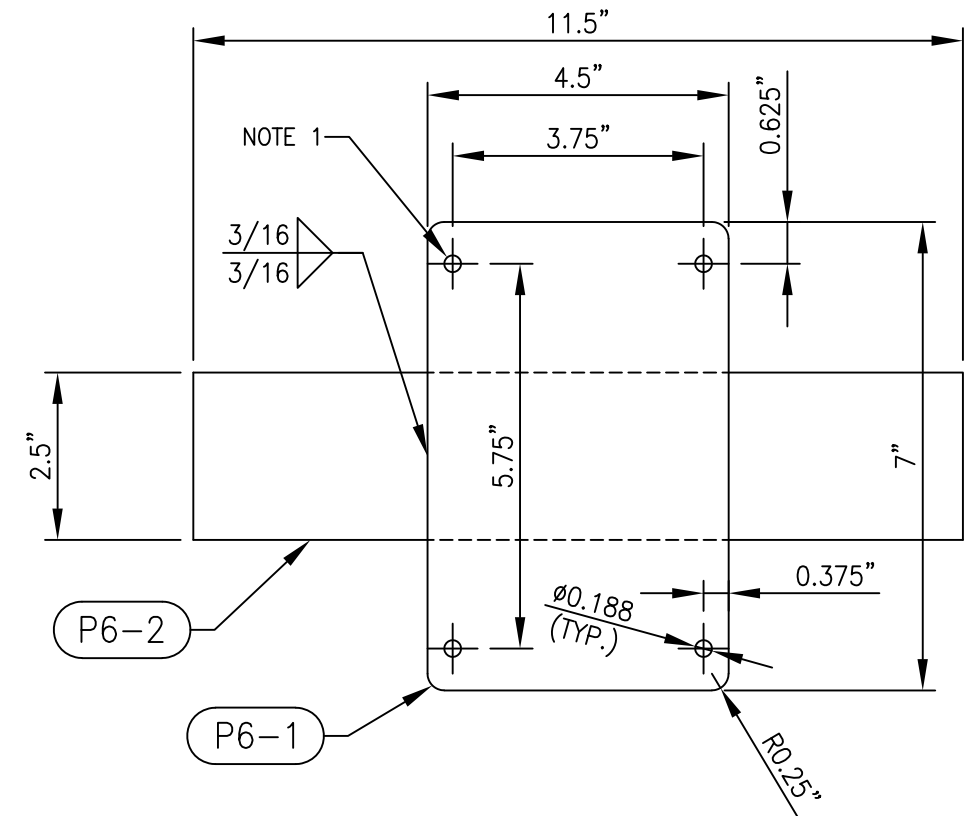


TOP VIEW



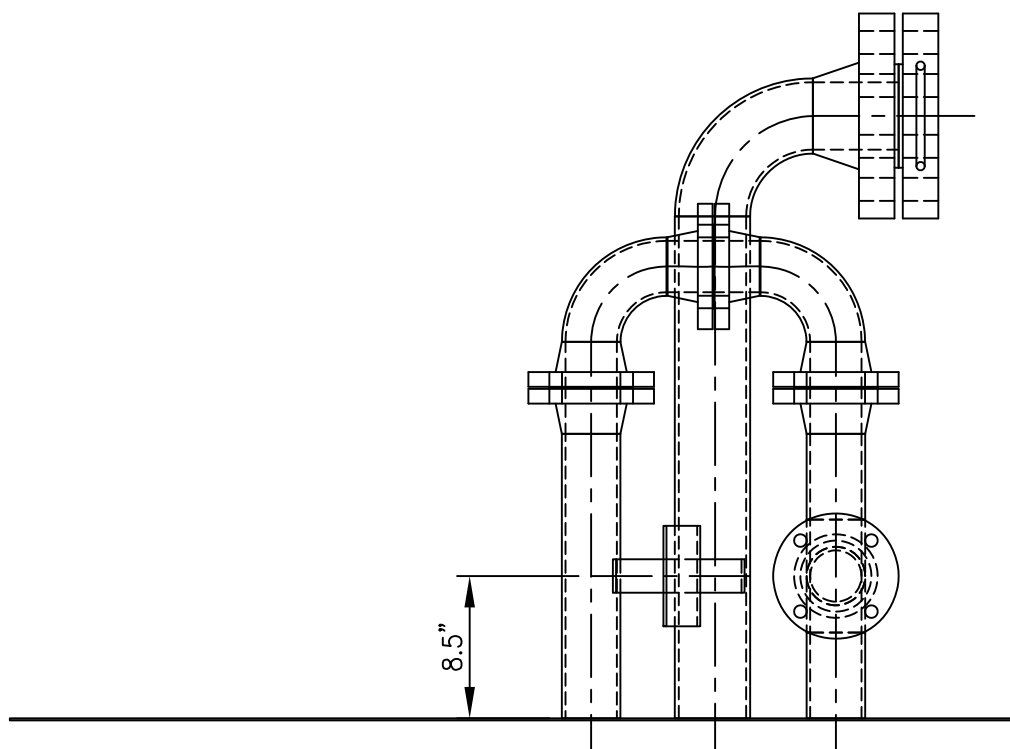
SECTION A-A

SCALE: 4/15



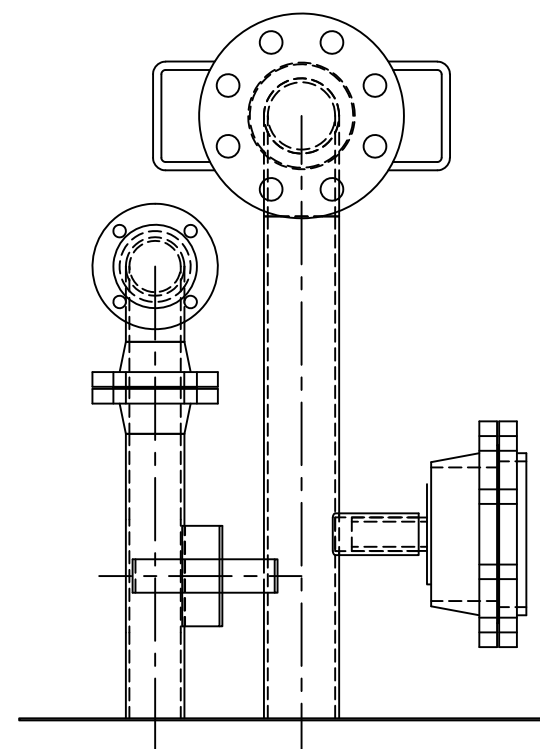
VIEW B-B

SCALE: 4/15



LEFT VIEW

(NPS 8" FLANGE HIDDEN FOR CLARITY)



FRONT VIEW

(NPS 3" FLANGE & TEE HIDDEN FOR CLARITY)

NOTES

- HOLES ARE INTENDED FOR SCREWS TO ATTACH THE CHUCK BRAIN TO THE PLATE (PART #P6-3).

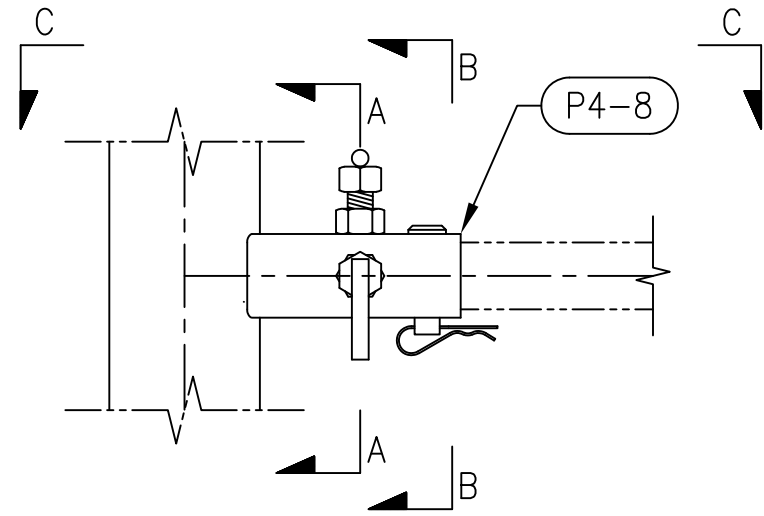
REV.	BY	REV'D.	DATE	DESCRIPTION
0	NB	EC	06/10/22	ISSUED FOR CONSTRUCTION



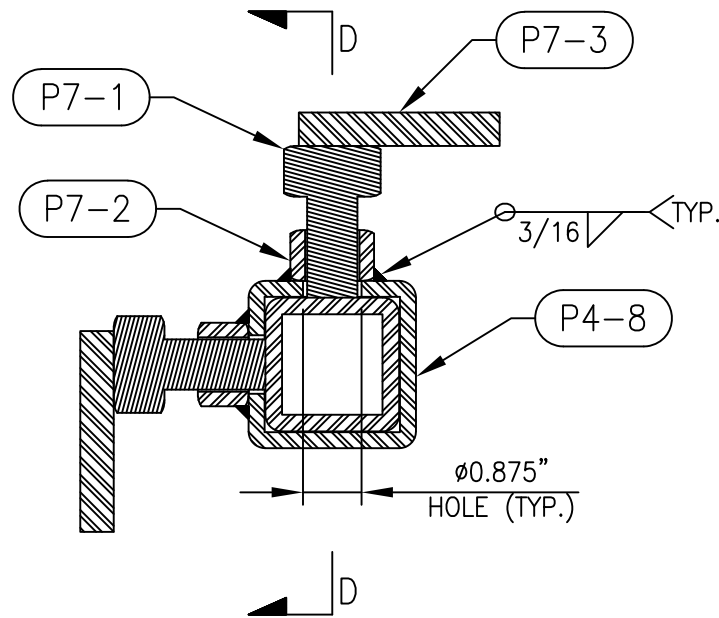
1600 E. TIGUA, KECHI, KANSAS 67067

CHUCK SKID DEMO UNIT
CHUCK BRAIN BRACKET DETAILS

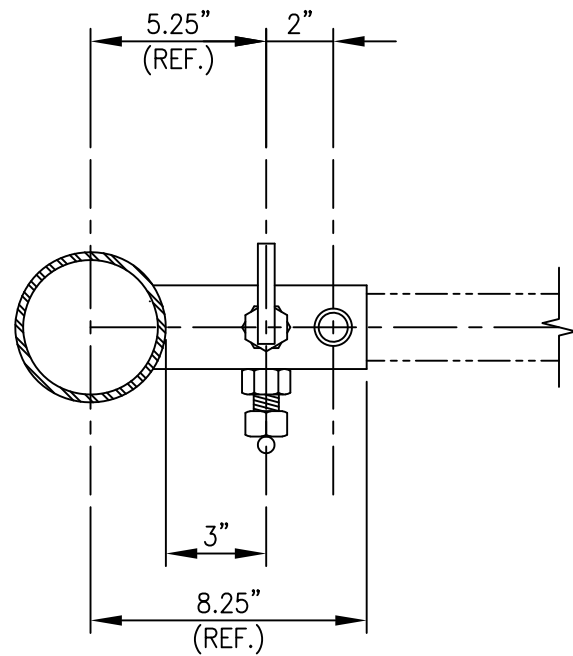
SCALE	DRAWING NUMBER	SHEET NUMBER	REVISION
1/15	33285-D-006	1 OF 1	0



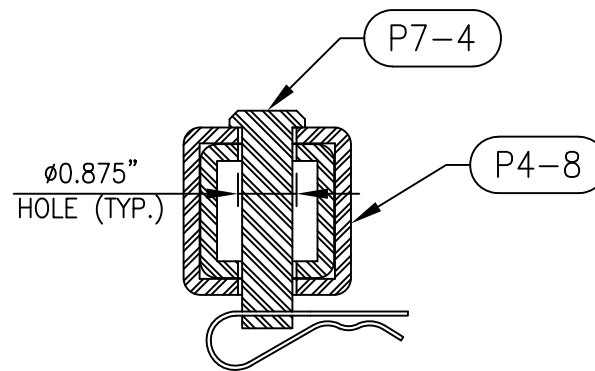
TRAILER HITCH DETAIL (TYP.)
SCALE: 2/15



SECTION A-A
SCALE: 4/15



VIEW C-C
SCALE: 2/15



SECTION B-B
SCALE: 4/15

BILL OF MATERIALS				
ITEM	QTY.	DESCRIPTION		MATERIAL
P7-1	6	0.75" UNC-10 BOLT, 1.5" LG. (2 PER HITCH)		CS
P7-2	6	0.75" UNC-10 NUT (2 PER HITCH)		CS
P7-3	6	0.5" BAR, 3" LG. (ATTACHED TO P7-1)		CS
P7-4	3	0.75" CLEVIS PIN W/ BRIDGE PIN		CS

REV.	BY	REV'D.	DATE	DESCRIPTION
0	NB	EC	05/16/22	ISSUED FOR CONSTRUCTION



1600 E. TIGUA, KECHI, KANSAS 67067

CHUCK SKID DEMO UNIT
TRAILER HITCH FASTENER DETAILS

SCALE	DRAWING NUMBER	SHEET NUMBER	REVISION
1/15	33285-D-007	1 OF 1	0